

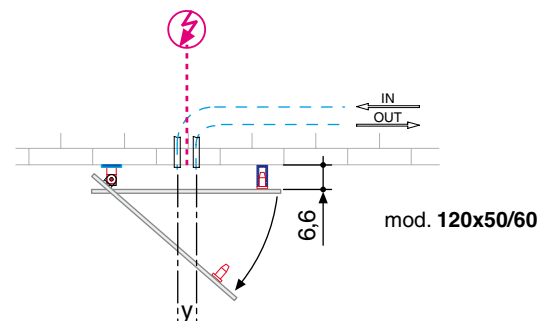
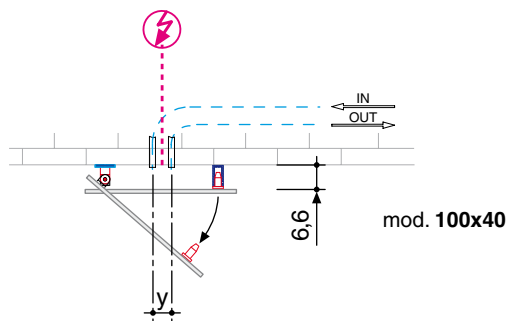
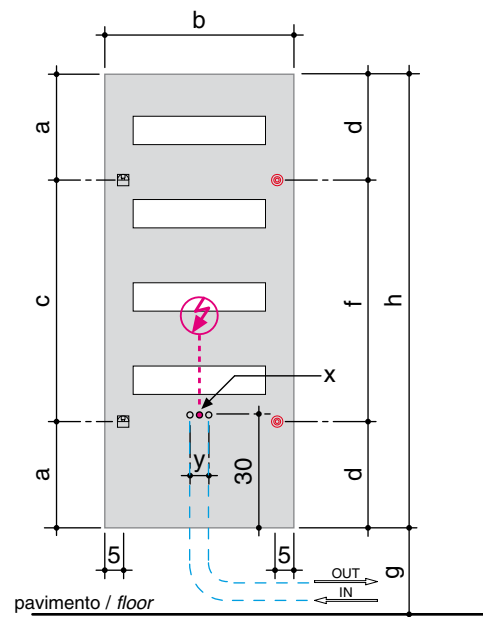
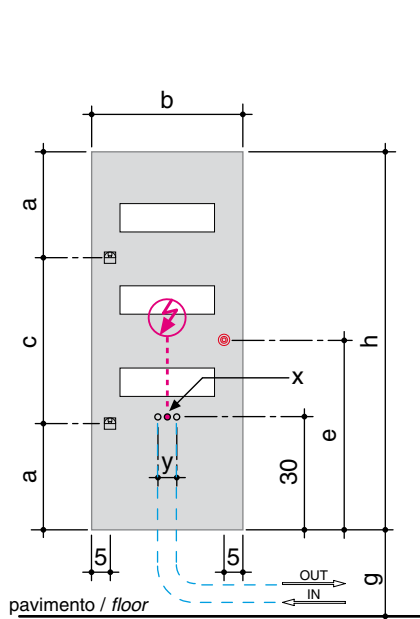
127/128. EASY

		hxb (cm)	Qs resa termica thermal yield Δt 50°C (watt)	Qs resa termica thermal yield Δt 50°C (Kcal)	peso a vuoto weight -empty (Kg)	volume d'acqua water volume (dm ³)	a (cm)	c (cm)	d (cm)	e (cm)	f (cm)
		100x40	336	289	9,00	0,14	28	44	-	50	-
120x50	512	440	13,00	0,22	28	64	28	-	64		
120x60	635	546	16,00	0,23	28	64	28	-	64		



x = posizione ingresso a muro del cavo (per versione elettrica)
electrical wire wall entry position (for electric version)

g = altezza da terra facoltativa (minimo 10 cm)
optional height from the floor (min. 10 cm)

y = interasse 5 cm per tubi rame e multistrato; 8 cm per tubi ferro filettato
5 cm centre to centre distance for copper and multilayer pipes; 8 cm for threaded iron pipes



129/130. EASY

		hxb (cm)	Qs resa termica thermal yield Δt 50°C (watt)	Qs resa termica thermal yield Δt 50°C (Kcal)	peso a vuoto weight -empty (Kg)	volume d'acqua water volume (dm ³)	a (cm)	c (cm)	d (cm)	e (cm)	f (cm)
		150x50	607	522	16,00	0,27	33	84	33	-	84
150x60	749	644	19,00	0,30	33	84	33	-	84		
180x50	755	649	20,00	0,32	35	110	35	-	110		
180x60	931	801	23,00	0,35	35	110	35	-	110		
180x75	1122	965	29,00	0,41	35	110	35	-	110		

x = posizione ingresso a muro del cavo (per versione elettrica)
electrical wire wall entry position (for electric version)

g = altezza da terra facoltativa (minimo 10 cm)
optional height from the floor (min. 10 cm)

y = interasse 5 cm per tubi rame e multistrato; 8 cm per tubi ferro filettato
5 cm centre to centre distance for copper and multilayer pipes; 8 cm for threaded iron pipes

