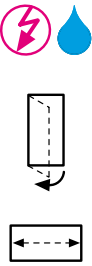



106. SMOOTH PRESTIGE

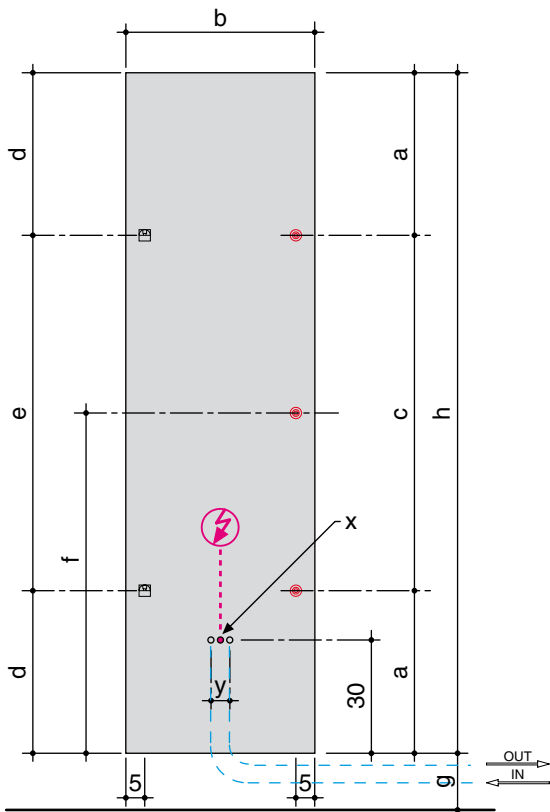
		hxb (cm)	Qs resa termica thermal yield Δt 50°C (watt)	Qs resa termica thermal yield Δt 50°C (Kcal)	peso a vuoto weight -empty (Kg)	volume d'acqua water volume (dm ³)	a (cm)	c (cm)	d (cm)	e (cm)	f (cm)
		80x80	661	568	17,00	0,29	18	44	18	44	44
100x100	985	847	26,00	0,47	18	64	18	64	64	-	
120x40	553	476	13,00	0,26	-	-	28	64	60	-	
180x50	913	785	24,00	0,42	43	94	43	94	-	-	
200x60	1201	1033	32,00	0,58	53	94	53	94	-	-	
40x120	553	476	13,00	0,26	-	-	28	64	60	-	
50x180	913	785	24,00	0,42	43	94	43	94	-	-	
60x200	1201	1033	32,00	0,58	53	94	53	94	-	-	

x = posizione ingresso a muro del cavo (per versione elettrica)
electrical wire wall entry position (for electric version)

g = altezza da terra facoltativa (minimo 10 cm)
optional height from the floor (min. 10 cm)

y = interasse 5 cm per tubi rame e multistrato; 8 cm per tubi ferro filettato
5 cm centre to centre distance for copper and multilayer pipes; 8 cm for threaded iron pipes

Istallazione verticale
Vertical installation



Istallazione orizzontale
Horizontal installation

