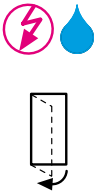



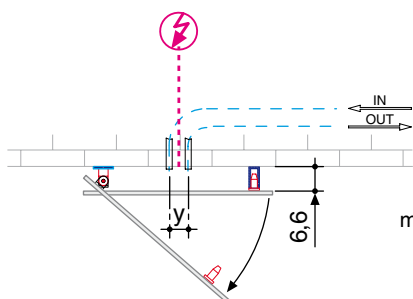
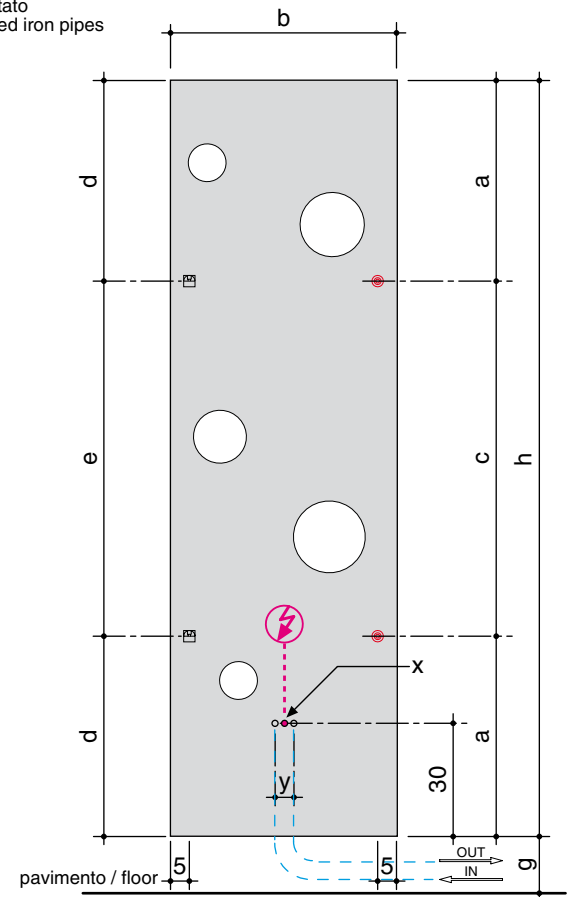
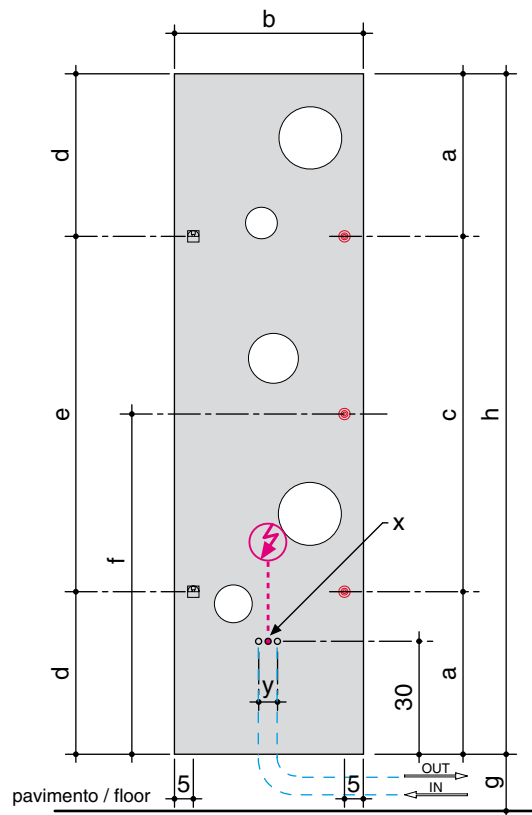
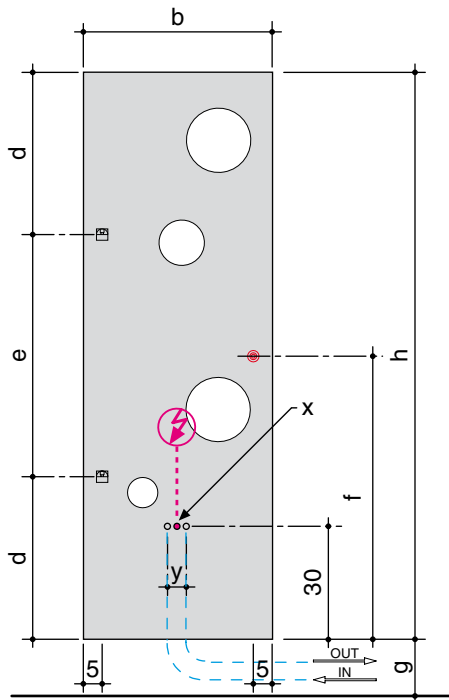
117. CHEESE

		hxb (cm)	Qs resa termica thermal yield Δt 50°C (watt)	Qs resa termica thermal yield Δt 50°C (Kcal)	peso a vuoto weight -empty (Kg)	volume d'acqua water volume (dm ³)	a (cm)	c (cm)	d (cm)	e (cm)	f (cm)
		150x50	745	641	18,00	0,25	-	-	43	94	43
180x50	891	766	22,00	0,30	43	94	43	94	43	94	-
200x60	1135	976	29,00	0,41	53	94	53	94	53	94	-

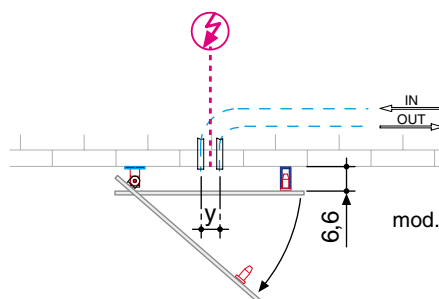
x = posizione ingresso a muro del cavo (per versione elettrica)
electrical wire wall entry position (for electric version)

g = altezza da terra facoltativa (minimo 10 cm)
optional height from the floor (min. 10 cm)

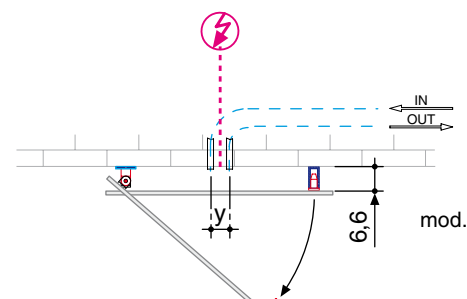
y = interasse 5 cm per tubi rame e multistrato; 8 cm per tubi ferro filettato
5 cm centre to centre distance for copper and multilayer pipes; 8 cm for threaded iron pipes



mod. 150x50



mod. 180x50



mod. 200x60